

Student's Name _____

Teacher's # _____ Branch _____

Score: _____ (Check one): *passed* _____ *needs more study* _____

Perfect Score = 125 Passing Score = 87 (70%)

Convention Eligibility = 100

Strings
Cello 8

CERTIFICATE OF MERIT™



Musical Knowledge Examination

Cello: Level 8

2008 Edition

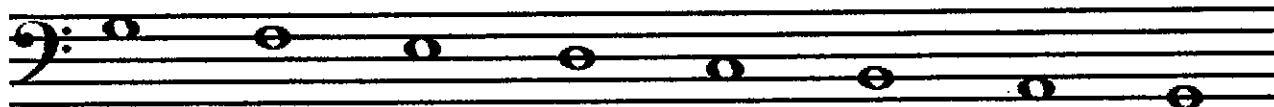
1. Name these Major and minor keys. The first one is given. (10 points)



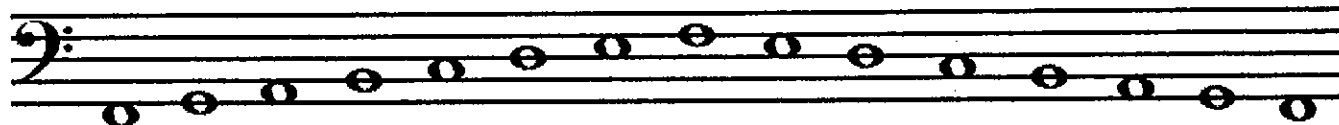
F Major _____ Major _____ Major _____ Major _____ Major _____ Major
d minor _____ minor _____ minor _____ minor _____ minor _____ minor

2. Add the sharp(s), flat(s) and/or natural(s) needed to complete these scales. (5 points)

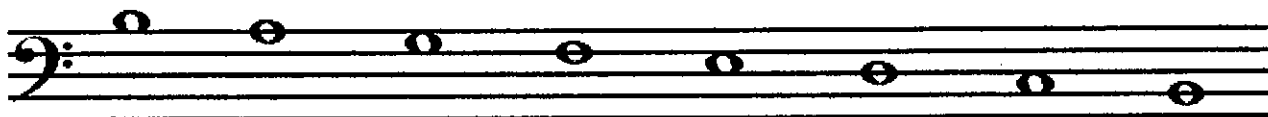
G^b Major



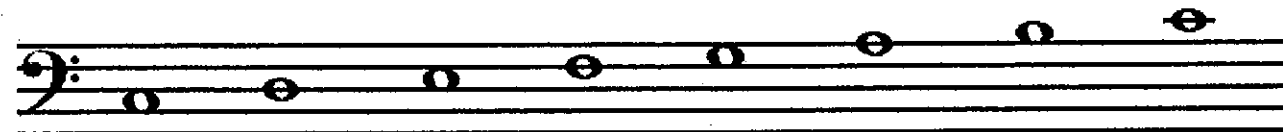
f[#] melodic minor



b harmonic minor



c[#] natural minor



C chromatic



3. Name three famous chamber music ensembles. (3 points)

4. Match the terms in the left column with their definitions in the right column. (You will not use all of the definitions.) The first one is given. (11 points)

Term		Definition
sul tasto	<u> f </u>	a. play on the string
stringendo	<u> </u>	b. follow without pause
punta d'arco	<u> </u>	c. freedom to alter tempo, rhythm, etc.
sautillé	<u> </u>	d. use wood of the bow, strike the string
con fuoco	<u> </u>	e. always
sempre	<u> </u>	f. bow lightly over the fingerboard
segue	<u> </u>	g. gradually get faster
col legno	<u> </u>	h. at the tip of the bow
au talon	<u> </u>	i. dying away
perdendosi	<u> </u>	j. rapid spiccato very close to the string
tremolo	<u> </u>	k. at the frog of the bow
ad libitum (ad lib)	<u> </u>	l. with fire, force
		m. rapid repetition of a note with a quick unmeasured bow stroke

5. List two characteristics of the Baroque period. You may include dates. (2 points)

6. List two characteristics of the Classical period. You may include dates. (2 points)

7. Write the last names of two composers for each of these periods of music history. (8 points)

Baroque _____

Classical _____

Romantic _____

Contemporary _____

8. What are the three sections of Sonata-Allegro form (in order)? (3 points)

9. Label these Major (M), minor (m), Perfect (P), diminished (d) and Augmented (A) intervals. NOTICE THE KEY SIGNATURE. The first one is given. (7 points)



A4 _____

10. Write these Major (M), minor (m), Perfect (P), diminished (d) and Augmented (A) intervals. The first one is given. (6 points)



P5 below A4 above m7 above M6 below m3 below d5 above M2 below

11. For each Major key, label the I (Tonic), IV (Subdominant) or V (Dominant) arpeggio AND write the name of the key. The first one is given. (6 points)



IV _____

Key of: G Major Key of: ____ Major Key of: ____ Major Key of: ____ Major

12. For each minor key, write the i, iv or V arpeggio in root position AND write the name of the key. The first one is given. (6 points)



V i iv V

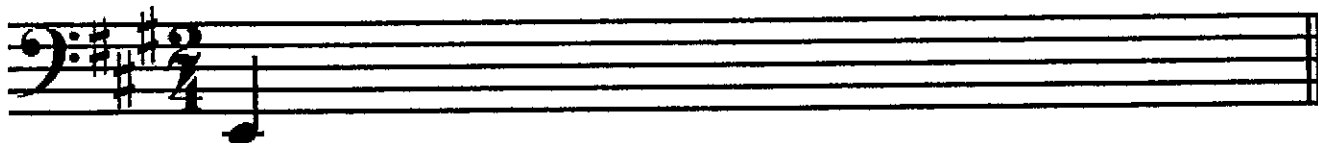
Key of: e minor Key of: ____ minor Key of: ____ minor Key of: ____ minor

18. Transpose the given melody below to the indicated key. The first note is given. (1 point)

C Major



A Major



19. Study each two measure phrase below. Match each example with the term that best describes the relationship between the first and second phrases. (4 points)

Parallel Major and minor keys: Example _____

Relative Major and minor keys: Example _____

Transposed keys: Example _____

Enharmonic keys: Example _____

Example A



Example B



Example C



Example D



Answer the following questions about the musical example below. (8 points)

Andante

1 2 3 4

dolce

5 6 7 8

20. What is the minor key? _____
21. There is no time signature given. What should it be? _____
22. What triad is boxed in measure 2 (*note name and quality*)? _____
23. How does the triad in measure 2 relate to the key? (*check one*)
- Tonic
 Subdominant
 Dominant
24. There seems to be a shift to a Major key starting in measure 6. What Major key does the example end in? _____
25. How are the starting and ending keys related? enharmonic parallel relative
26. What is the definition of *dolce*? _____
27. What is the definition of *Andante*? _____

Ear Training

Listen to each question and its musical example and mark your answer. Each example will be played two times. (14 points)

1. Recognition of Major and minor scale patterns

Example 1 Major harmonic minor melodic minor
 Example 2 Major harmonic minor melodic minor
 Example 3 Major harmonic minor melodic minor

2. Recognition of intervals

Example 1 P4 A4 P5 M6
 Example 2 M3 A4 M6 M7
 Example 3 m2 M3 m6 m7

3. Recognition of Major, minor and Augmented triads

Example 1 Major minor Augmented
 Example 2 Major minor Augmented
 Example 3 Major minor Augmented

4. Intonation: Is the second note higher (sharp), lower (flat), or the same as the first note?

Example 1: second note higher lower same
 Example 2: second note higher lower same
 Example 3: second note higher lower same

5. Which articulation do you hear?

A. 

B. 

6. What is the tempo of this example?

Presto Largo