

[Student Information]

Name: \_\_\_\_\_  
Student ID: \_\_\_\_\_  
Teacher #: \_\_\_\_\_  
Branch: \_\_\_\_\_

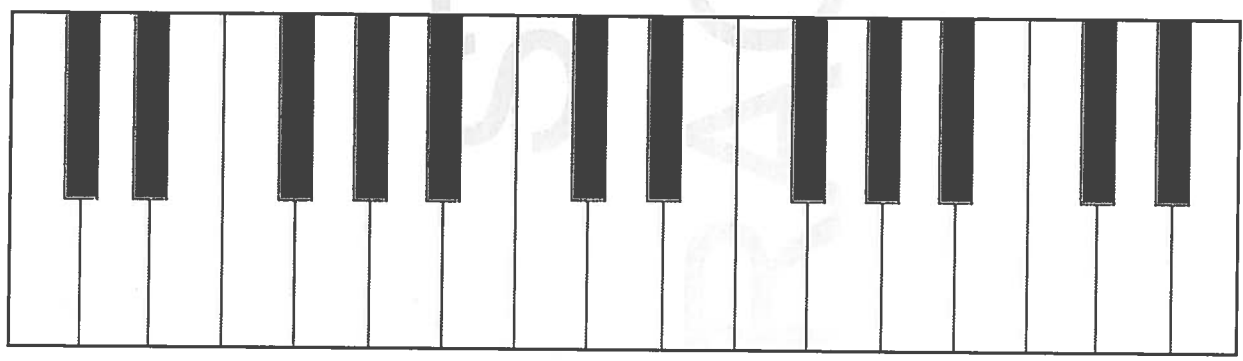
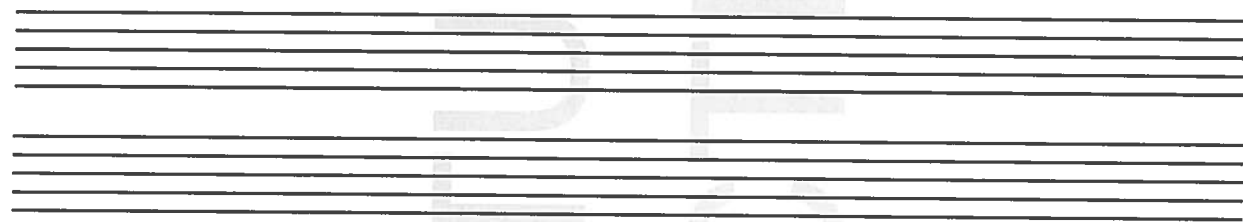
Perfect Score: 80  
Number Incorrect: \_\_\_\_\_  
Final Score: \_\_\_\_\_  
Score Rating: PASS\* / RAL  
Grader Teacher #: \_\_\_\_\_  
\* Passing Score is 56 or higher

Cello  
Level 1

# Certificate of Merit®


## Practice Theory Test

### 2016




Cello Level 1

1. Mark the half steps on the following scales. (2 points total / 1 point each scale)


Example: 




2. Is it a WHOLE or HALF step? Mark your answer. (10 points total / 1 point each)




whole step     whole step     whole step     whole step     whole step  
 half step     half step     half step     half step     half step




whole step     whole step     whole step     whole step     whole step  
 half step     half step     half step     half step     half step

3. Is it a STEP or a SKIP? Mark your answer. (10 points total / 1 point each)

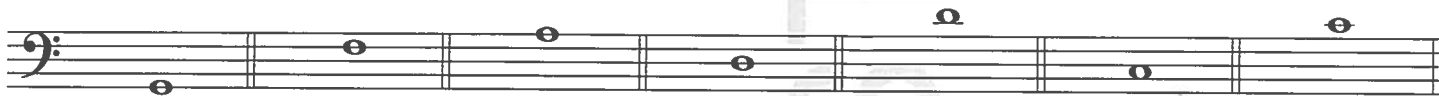


step     step     step     step     step  
 skip     skip     skip     skip     skip



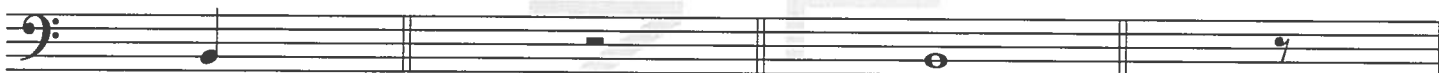
step     step     step     step     step  
 skip     skip     skip     skip     skip

4. Name the following notes. (7 points total / 1 point each)



\_\_\_\_\_

5. Mark the correct name of the note or rest. (8 points total / 1 point each)



Quarter Rest       Whole Rest       Half Note       Quarter Rest  
 Quarter Note       Half Rest       Whole Note       Eighth Rest



Half Note       Half Note       Quarter Rest       Half Rest  
 Whole Note       Eighth Note       Whole Rest       Whole Rest

Fill in the blank. (3 points total / 1 point each)

6. The time signature  $\frac{4}{4}$  means \_\_\_\_\_ beats per measure and  $\text{♩}$  gets 1 beat.

7. The time signature  $\frac{2}{4}$  means 2 beats per measure and  $\text{♩}$  gets \_\_\_\_\_ beat.

8. The time signature  $\frac{3}{4}$  means \_\_\_\_\_ beats per measure and  $\text{♩}$  gets 1 beat.

Mark the word(s) that best match(es) the meaning.  
(7 points total / 1 point each)

9. The distance between two notes

*crescendo*  
 interval  
 slur

10. Play the music inside the signs again

repeat sign  
 tie  
 *fermata*

11. Connects two notes of the same pitch in one bow

tie  
 *diminuendo*  
 slur

12. Gradually softer

*decrescendo*  
 *crescendo*  
 *fermata*

13. Pattern of notes that moves up and down by steps

interval  
 scale  
 *fermata*

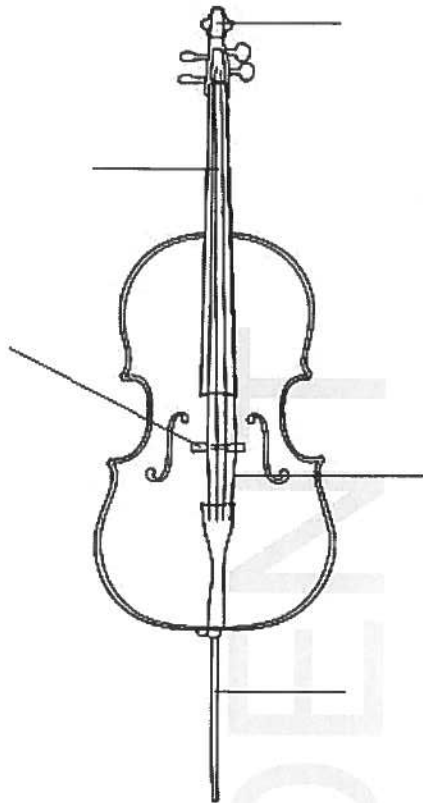
14. Smooth, connected notes with no break in the sound

*legato*  
 interval  
 slur

15. Short, separate notes on the string

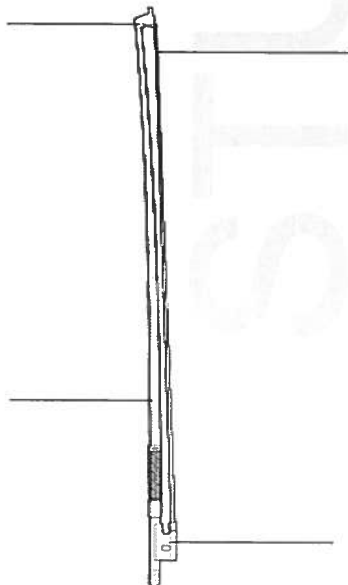
*crescendo*  
 *staccato*  
 *ritardando*

16. Fill in the names of the parts of the cello. Choose from words listed on the right. NOT all answers will be used. (5 points total / 1 point each)



- bridge**
- end pin**
- fingerboard**
- forte**
- scroll**
- strings**

17. Fill in the names of the parts of the bow. Choose from words listed on the right. NOT all answers will be used. (4 points total / 1 point each)



- frog**
- hair**
- staccato**
- stick**
- tip**

Answer questions 18-30 about the musical example above.

(14 points total / 1 point each)

18. Does the music start loud or soft?  
(Mark your answer.)

loud  
 soft

19. Does the key signature have a sharp or a flat?  
(Mark your answer.)

sharp  
 flat  
 no sharp, no flat

20. How many slurs are in the music?  
(Fill in the blank.)

slur(s)

21. How many ties are in the music?  
(Fill in the blank.)

tie(s)

22. Which measures should be played *staccato*? measures \_\_\_\_\_ to \_\_\_\_\_  
(Fill in the blank.)
23. Which measure has a *fermata* sign? measure \_\_\_\_\_  
(Fill in the blank.)
24. How would you play the note with a *fermata*? \_\_\_\_\_ hold longer  
(Mark your answer.) \_\_\_\_\_ loud
25. What does the flat sign in measure 9 do? \_\_\_\_\_ raises the note by half step  
(Mark your answer.) \_\_\_\_\_ lowers the note by half step
26. What does the natural sign in measure 17 do? \_\_\_\_\_ cancels out the flat sign  
(Mark your answer.) \_\_\_\_\_ lowers the note by half step
27. Which measure does the music begin to slow down gradually? measure \_\_\_\_\_  
(Fill in the blank.)
28. Which measure does the music return to the original speed? measure \_\_\_\_\_  
(Fill in the blank.)
29. Does measure 17 start down bow or up bow? \_\_\_\_\_ down bow  
(Mark your answer.) \_\_\_\_\_ up bow
30. Which term means the same as the *diminuendo* in measure 21? \_\_\_\_\_ *crescendo*  
(Mark your answer.) \_\_\_\_\_ *decrescendo*

