

Student's Name _____

Teacher # _____ Branch _____

STRINGS
CELLO ADV

Perfect Score: 142
Number Incorrect: _____
Final Score: _____

		Circle	
Passing	99	Yes	No
Convention Eligibility	114	Yes	No
Exemption	128	Yes	No

*CERTIFICATE OF MERIT*TM

Musical Knowledge Examination

2009



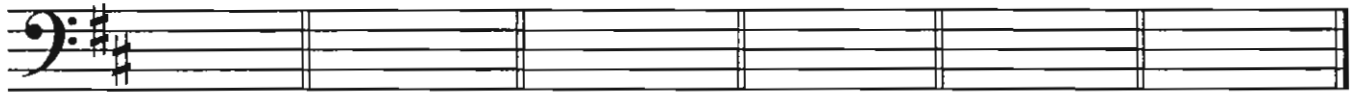
CELLO ADVANCED LEVEL

Ear Training - Year 2

Copyright © 2009 Music Teachers' Association of California

1. Write the key signatures for the following major keys and name the relative minor. The first one is given.

(10 points)



D Major E^b Major D^b Major B Major F[#] Major E Major
 b minor ____ minor ____ minor ____ minor ____ minor ____ minor

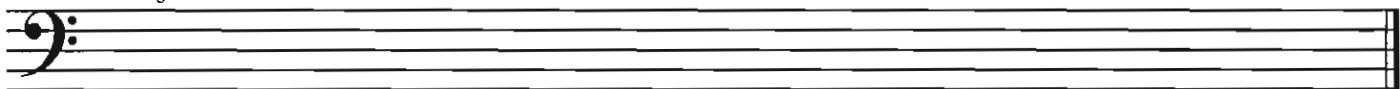
2. Write the following scales using accidentals. Do NOT use key signatures.

(10 points total, 2 points each)

G^b Major



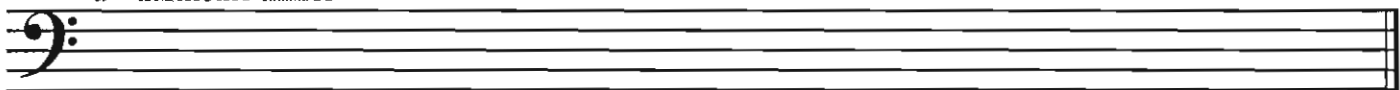
A Major



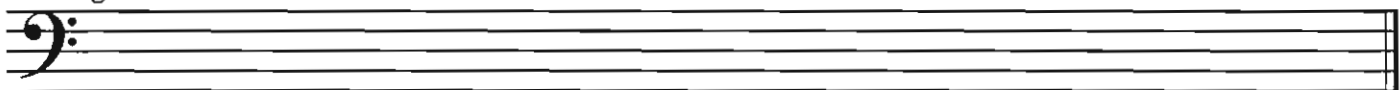
b^b natural minor



a[#] harmonic minor

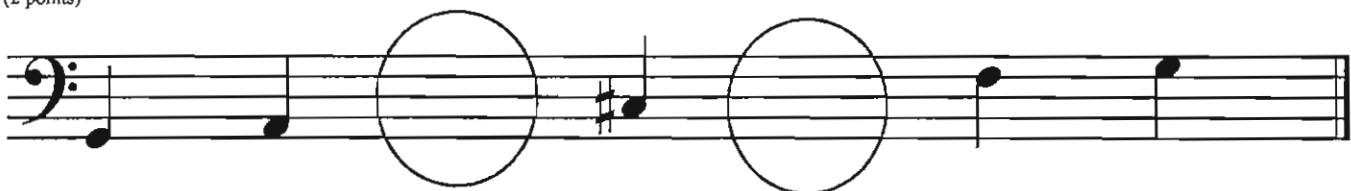


g melodic minor



3. Fill in the missing notes to complete the following whole tone scale:

(2 points)



4. Fill in the missing notes to complete the following chromatic scale:

(2 points)

5. Write the Tonic (I), Subdominant (IV), and Dominant Seventh (V₇) arpeggios for each key:

(12 points)

Example:

C Major: I IV V₇

A Major: I IV V₇ D^b Major: I IV V₇

c minor: i iv V₇ g[#] minor: i iv V₇

6. Name the following INTERVALS. The first one is done for you:

(9 points)

m6 _____ _____ _____ _____ _____

7. Write the NOTE to complete the following intervals. The first one is done for you:

(7 points)

m2 above m9 below P5 above M7 above m6 below M10 below A4 above m3 above

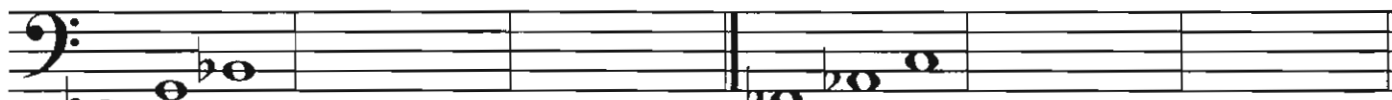
8. Name the QUALITY (Major, minor, Augmented, or diminished) of the following triads and write the INVERSIONS:

(12 points)

Example:



minor 1st Inversion 2nd Inversion



_____ 1st Inversion 2nd Inversion _____ 1st Inversion 2nd Inversion



_____ 1st Inversion 2nd Inversion _____ 1st Inversion 2nd Inversion

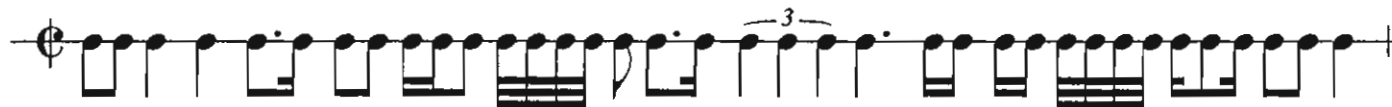
9. Transpose the following music from e minor to d minor:

(2 points)



10. Draw bar lines:

(4 points total, 2 points each)



11. Fill in the missing time signature:

(1 point)



12. Write ONE NOTE to complete each measure:

(4 points)

13. Write ONE REST to complete each measure:

(4 points)

14. Study the phrases below and answer the following questions:

(5 points)

Original music:

Example A:

Example B:

Example C:

Example D:

What is the key of the original music? _____ Major

Which example is in the ENHARMONIC KEY of the original music? Example _____

Which example is in the RELATIVE MINOR of the original music? Example _____

Which example is in the PARALLE MINOR of the original music? Example _____

Which example is a TRANSPOSITION of the original music? Example _____

15. Name three famous composers for each music period:

(12 points)

Baroque	_____	_____	_____
Classical	_____	_____	_____
Romantic	_____	_____	_____
Contemporary	_____	_____	_____

16. Name two characteristics of each of the following periods. You may include dates:

(10 points)

Baroque	_____	_____
Classical	_____	_____
Romantic	_____	_____
Impressionistic	_____	_____
Contemporary	_____	_____

17. Matching:

(12 points)

<u>Term</u>	<u>Definition</u>
theme & variations _____	a. tenderly, affectionately
affetuoso _____	b. string is plucked vertically and rebounds off fingerboard
tempo giusto _____	c. bass part played by harpsichord and cello, or organ
Bartók pizzicato _____	d. form of music with theme stated successively in all voices
scordatura _____	e. playful, humorous
continuo _____	f. sliding toward a pitch
rondo _____	g. or, alternate
giocoso _____	h. tutti minus the solo group
ripieno _____	i. piece with repetition of principal theme after each new theme is introduced (A, B, A, C, A, D, etc.)
fugue _____	j. unconventional tuning of stringed instruments
ossia _____	k. in a strict tempo (non-rubato)
glissando _____	l. consists of a theme and different versions of the theme

18. Study the examples below and **match** the terms which best describe the phrases in each musical example. Match **two** terms for each musical example:

(4 points)

Repetition •

Sequence •

Hemiola •

Syncopation •



19. Answer the following questions about the musical example below:

(6 points)

Andante

f

spiccato

pizz.

mp

arco

ff

1. There is no time signature indicated. Which of the following could it be? (check your answer)

$\frac{5}{4}$ $\frac{9}{8}$ $\frac{2}{2}$ $\frac{3}{2}$

2. What is the formal structure of the music?

Fugue
 Theme and Variations
 Sonata-Allegro
 Rondo

3. What is the key or tonality of the music?

A Major
 F Major
 B Major
 G Major

4. How is the third phrase (m. 9-12) related to the rest of the piece?

Relative minor
 Parallel minor
 Dominant key
 No relation

5. What does the tempo marking "Andante" mean?

fast and lively
 at a walking tempo
 extremely slow, stately, broadly

6. Is Andantino faster or slower than Andante?

faster
 slower

Ear Training

Listen to each question and its musical example, and mark your answer.
Each example will be played 2 times.

(14 points)

1. Recognition of Major and minor scale patterns

Example 1 _____ Major _____ harmonic minor _____ melodic minor

Example 2 _____ Major _____ harmonic minor _____ melodic minor

Example 3 _____ Major _____ harmonic minor _____ melodic minor

2. Recognition of intervals

Example 1 _____ m3 _____ A4 _____ P4 _____ M7

Example 2 _____ M2 _____ M3 _____ m6 _____ M6

Example 3 _____ m2 _____ A4 _____ m7 _____ M7

3. Recognition of Major, minor, Augmented and diminished triads

Example 1 _____ Major _____ minor _____ Augmented _____ diminished

Example 2 _____ Major _____ minor _____ Augmented _____ diminished

Example 3 _____ Major _____ minor _____ Augmented _____ diminished

4. Intonation: Is the second note higher (sharp), lower (flat), or the same as the first note?

Example 1: second note _____ higher _____ lower _____ same

Example 2: second note _____ higher _____ lower _____ same

Example 3: second note _____ higher _____ lower _____ same

5. Which articulation do you hear?

A. _____

B. _____

6. Hemiola or syncopation?

_____ hemiola _____ syncopation